

Honeywell
Wireless Rain Gauge with Indoor
Temperature

(TC152)
USER MANUAL

TABLE OF CONTENTS

INTRODUCTION	3
PRODUCT OVERVIEW	4
REMOTE RAIN GAUGE	7
BEFORE YOU BEGIN	9
BATTERY INSTALLATION	10
LOW BATTERY WARNING	11
HOW TO USE THE TABLE STAND	11
GETTING STARTED	11
LOST COMMUNICATION	13
TRANSMISSION COLLISION	13
CALENDAR AND CLOCK DISPLAY MODES	13
INDOOR TEMPERATURE	14
MANUAL SETTINGS	14
PRECAUTIONS	15
SPECIFICATIONS	17
FCC STATEMENT	18
DECLARATION OF CONFORMITY	19
STANDARD WARRANTY INFORMATION	20

INTRODUCTION

Thank you for selecting the Honeywell Wireless Rain Gauge with Indoor Temperature. This device monitors and displays rainfall data along with the indoor temperature.

In this package you will find:

- One main unit (receiver)



- One remote rain gauge (transmitter)



- User Manual

Please keep this manual handy as you use your new item. It contains practical step-by-step instructions, as well as technical specifications and precautions you should know.

PRODUCT OVERVIEW

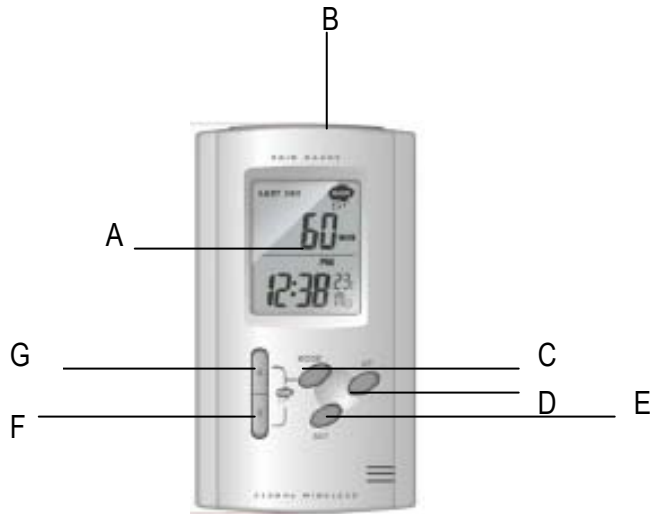
MAIN UNIT

FEATURES

- Wireless transmission of the rainfall data from the remote rain gauge to the main unit up to 100 feet (30 meters) away
- Rainfall may be displayed in inches or mm
- Programmable Rain Alarm
- 7 days of rain collection history
- Built-in rain gauge installation level
- Hourly, daily and weekly rainfall history
- Quartz clock with calendar
- Programmable Time Zones
- Day of the week in English, German, French, Spanish or Italian
- Wall mount or desktop option
- Low battery indicator

FRONT VIEW

A. WEATHER AND TIME INFORMATION IN A TWO - LINE LCD DISPLAY



B. ALARM button

- Toggles display between the rainfall modes – a current rainfall data and a rain alarm programming mode
- Activates the high rainfall alarm setting mode

C. MODE button

- Toggles display between the rainfall modes – for the past hour, 24hours, and for the past 7 days

D. UP (▲) button

- Increases parameters in the clock programming mode

E. SET button

- Toggles between four clock modes – time with seconds, time with the day of the week, Time Zone programming and calendar
- Allows entering into the clock programming mode

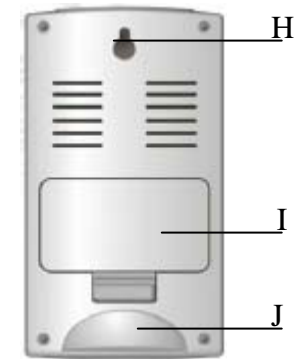
F. ▲ button

- Toggles between the rainfall modes – for the past hour, 24 hours, and for the past 7 days
- Increases parameters in the rain mode
- Enables or disables rain alarm

G. ▼ button

- Toggles between the rainfall modes – for past hour, for the past 24 hours, and for the past 7 days
- Decreases parameters in the rain mode
- Enables or disables high rain alarm
- Enforces the remote rain gauge signal search in the rain mode

REAR VIEW



H. WALL-MOUNT RECESSED OPENING

Keeps the main unit on the wall

I. BATTERY COMPARTMENT

Accommodates 2 (two) UM-3 or AA 1.5V alkaline batteries.

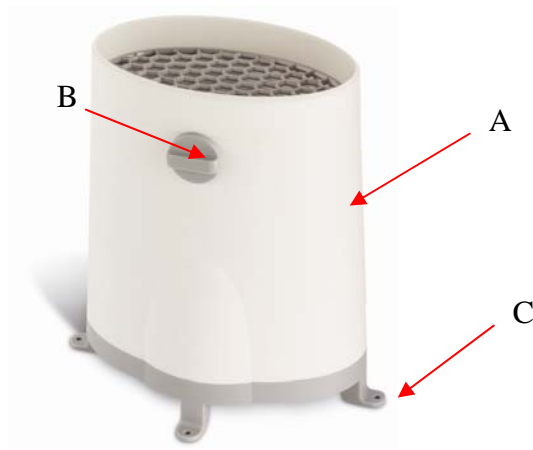
J. REMOVABLE TABLE STAND

Keeps main unit in upright position on a flat surface

REMOTE RAIN GAUGE

FEATURES

- Precipitation measurement
- Remote rainfall data transmission to the main unit via 433 MHz signal
- 100 feet (30 meters) transmission range without interference
- Built-in installation level
- Mounting hardware
- Non-corrosive protective screen



A. Rain gauge bucket

Holds all rain gauge components

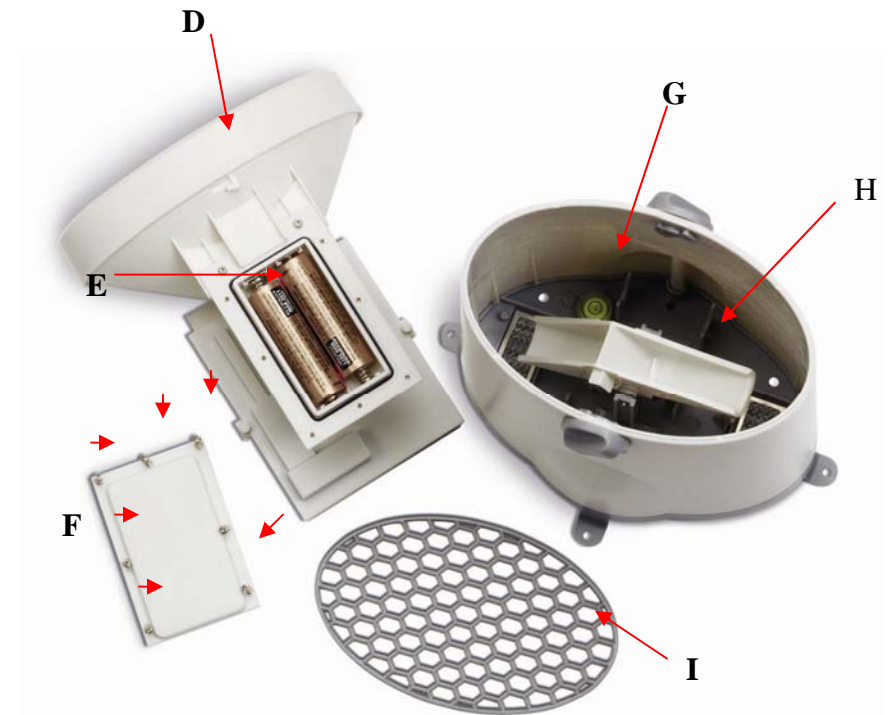
B. Knob

Secures the top on the rain gauge bucket

C. Rain gauge bucket feet

Allow securing the rain gauge on its place

REMOTE RAIN GAUGE



D. Funnel-shaped top with battery compartment

Contains battery compartment and rainfall counting electronics

E. Battery compartment

Holds two AA-size batteries

F. Screws

Secure battery compartment cover

G. Built-in leveler

Allows leveling rain gauge on the surface

H. Bucket see-saw mechanism

Collects the rainfall in one of its containers and self-empties once full

I. Protective screen

Protects the rain gauge funnel from debris

BEFORE YOU BEGIN

- We recommend using alkaline batteries for the remote rain gauge and main unit when temperatures are above 32°F (0°C). We recommend using lithium batteries for remote rain gauge when temperatures are below 32°F (0°C).
- Avoid using rechargeable batteries. (Rechargeable batteries cannot maintain correct power requirements).
- **ALWAYS** install batteries into the **remote rain gauge** *before* the main unit.
- Insert batteries before first use, matching the polarity in the battery compartment
- Remove protective plastic screen from LCD display (If any)
- During an initial setup, place the main unit close to the remote rain gauge
- **Important:** Only after reception is established (the remote rainfall data will appear on the main unit's display), you may position and mount the remote rain gauge sensor within the effective transmission range of 100 feet (30 meters) from the main unit
- The remote rain gauge must be placed outdoors on the open area, away from the walls, fences and trees and level.
- It is important that excess precipitation can freely flow from the remote rain gauge.
- The main unit must be placed indoors.

NOTE:

1. Avoid pressing any buttons on the main unit *before the remote*

rainfall is displayed.

2. The effective operating range may be influenced by the surrounding building materials and how the receiver (main unit) and transmitter (remote rain gauge) are positioned.

3. Place the remote rain gauge so that it faces the main unit (receiver), minimizing obstructions such as doors, walls, and furniture.

NOTE: When the temperature falls below freezing, the batteries in the remote rain gauge may have reduced voltage supply and a shorter effective range. We recommend using lithium batteries at temperatures of 32°F (0°C) and below.

We also recommend covering the remote rain gauge tightly with a plastic during the winter time or move it indoors.

BATTERY INSTALLATION

REMOTE RAIN GAUGE

- Unlock the funnel-shaped top on the rain gauge by turning both knobs on the sides in an anti-clockwise direction
- Remove the funnel-shaped top lifting it off the rain gauge bucket
- Remove 7 small screws from the battery compartment cover using a small Phillips screwdriver
- Insert 2 "AA" size alkaline batteries (not included), matching the polarities as shown in the battery compartment
- Replace the battery compartment door and secure the screws
- Insert the funnel-shaped top into the rain gauge bucket and secure it into place by turning the knobs clockwise

RAIN GAUGE PLACEMENT TIPS


- Make sure that the remote rain gauge is level – check if the ball bearing inside the bucket is at the midpoint of the leveler

- Place the protective screen over the top to protect the rain gauge from the debris
- Mount the rain gauge using mounting hardware provided
- Make sure that the rain gauge is in open area where precipitation falls directly into the gauge's bucket, ideally 2-3 feet above the ground

MAIN UNIT

- Open the battery compartment door
- Install 2 batteries (UM-3 or "AA" size 1.5V) matching the polarity as shown in the battery compartment
- Replace the battery compartment door

LOW BATTERY WARNING

A low-battery indicator [] will appear on the remote rainfall reading line of the main unit, warning that the corresponding batteries need replacement.

HOW TO USE THE TABLE STAND

The main unit has a removable table stand that supports it on the flat surface.

Attach table stand to the bottom of the main unit in the slots provided.

The main unit can also be mounted on the wall using the recessed screw hole. The table stand must be removed prior to mounting.

GETTING STARTED


After batteries are installed, the remote rain gauge will transmit rainfall data at about 183 second intervals. The main unit may take up to two minutes to receive the initial readings. Upon successful reception, the

rainfall reading (**0.00**) will appear on the top line of the main unit's display. The main unit will automatically update readings at 45-second intervals. If no signals received from the remote rain gauge, dashes [- - -] will be displayed.



Press and hold the **DOWN** (▼) button on the main unit for two seconds or until Rain symbol will start flashing, to initiate a signal search for the remote rain gauge.

REMOTE RAINFALL DATA

The remote rainfall information line is located on the top line of the main unit's display.

The rain icon  is located to the left of the rainfall reading and indicates the reception status from the remote rain gauge.

There are three following types of the reception status that may be displayed:

The unit is in searching mode.	
Rainfall readings are securely registered.	
No signals detected.	- - -

Press and hold the **MODE** button on the front panel to display the rainfall reading in inches or mm.

RAINFALL HISTORY

The rainfall history records will be automatically stored in the memory of the main unit. There are three historical records may be displayed – for the past hour, past day and past week.

To display any of available rainfall history reading, use **MODE, UP** or

DOWN buttons. The display sequence is: **LAST HOUR, LAST 24 HOURS**, and **LAST 7 DAYS**.

LOST COMMUNICATION

If the main unit display line for the remote rain gauge reading goes blank, press and hold the ▼ button for 2 seconds to begin a new signal search.

If the signal still isn't received, please make sure that:

- The remote rain gauge is in its proper location.
- The distance between main unit and remote rain gauge is not over 100 feet (30meters).
- The path between units is clear of obstacles. Shorten the distance if necessary.
- Fresh batteries are installed correctly in both remote rain gauge and main unit.

TRANSMISSION COLLISION

Signals from the other household devices such as wireless doorbells, home security systems, and entry control, may interfere with this product or cause temporary reception interruption. This is normal and will not affect the general performance of the product. The transmission and reception of the remote readings will resume once the interference subsides.

CALENDAR AND CLOCK DISPLAY MODES

Date is displayed in month-date or date-month format. Each press of the **SET** button will toggle the clock modes between the time with seconds, time with the day, time zone and a calendar.

INDOOR TEMPERATURE

The indoor temperature is locating above the day of the week abbreviation/seconds and can be viewed either in Celsius or Fahrenheit.

NOTE: If the indoor temperature goes above or below operating range stated in specifications, the display will show dashes [- - -]

MANUAL SETTINGS

CLOCK

- Press and hold **SET** button for 3 seconds: the language abbreviation letters will flash
- Press **UP** button to select the desired language –**EN**(English), **DE**(German), **FR**(French), **IT**(Italian), or **SP**(Spanish)
- After the language is set, press **SET** button to move to the next value – the indoor temperature digits will flash
- Press **UP** button to select the temperature in Celsius or Fahrenheit
- Continue setting the year, month, date, calendar format, 12 or 24 hour time format, hour and minutes.
- Press **SET** for the last time to return to the default mode (time of day with seconds) after the last parameter is set.

TIME ZONE

The option to set a time zone is provided for your convenience – if you will travel or move to the place with a different Time Zone, you won't have to set clock again. You would need to adjust only a Time Zone.

- Select Time Zone setting mode by pressing **SET** button until the word "**ZONE**" will appear on the top of time display
- Press and hold **SET** button until flashing "**0:00 +**" digits will appear prompting to set the desired time zone in 30 minutes

intervals

- Press **UP** button selecting a desired time interval and press **SET** confirming the setting

HIGH RAIN ALARM

The high rain alarm for the past 24 hours can be set and displayed at any time by pressing **ALARM** button on the front panel.

To set the high rain alarm,

- Press the **ALARM** button on the front panel until the “**ALARM HI**” will appear on the upper right corner of the rainfall information line.
- Press and hold the **ALARM** button for 2 seconds or until the rainfall data digits will flash.
- Enter the rainfall amount you want to set the rain alarm for using the buttons ▲ or ▼
- Press the **ALARM** button again to confirm and the high rain alarm will be set

PRECAUTIONS

This product is engineered to give you years of satisfactory service if handled carefully. Here are a few precautions:

- Do not immerse the units in water.
- Do not clean the units with abrasive or corrosive materials. They may scratch the plastic parts and corrode the electronic circuits.
- Do not subject the product to excessive force, shock, dust, temperature, or humidity, which may result in malfunctions, shorter lifespan, damaged batteries, and damaged parts.
- Do not tamper with the units internal components. Doing so will invalidate the warranty and may cause damage. These units

contain no user-serviceable parts.

- Use only fresh batteries. Do not mix new and old batteries.
- Read the user's manual thoroughly before operating the units.

SPECIFICATIONS

Main Unit

TIME

12/24 hour display in hh: mm format

Date format: month-day or day-month format

Day of the week is selectable in five languages (English, Spanish, French, German, Italian)

Time zone manual adjustment

WEATHER

Rainfall

Proposed operating range: 0 to 1999.9mm/0 to 78.74 inch

Rainfall resolution: 0.03 inch (0.7 mm)

Indoor Temperature

Proposed operating range: -5.0°C to +50.0°C/23.0°F to 122.0°F

Temperature resolution: 0.1°C/0.2°F

User-selectable (°F or °C) temperature display

Low battery indicator

Wall Mount or Desktop option

Remote Rain Gauge

Remote Rainfall Data

Proposed operating range: -5.0°C to +50.0°C/23.0°F to 122.0°F

RF transmission frequency: 433 MHz

RF transmission range: maximum 100 feet (30 meters)

Rainfall transmission cycle: approximately 183 seconds

Power

Main unit: 2 AA size (UM-3) 1.5V batteries (not included)

Remote rain gauge: 2 AA size (UM-3) 1.5V batteries (not included)

Dimensions

Main unit: 2.64(L) x 4.84(H) x 1.02(D) inches

Remote rain gauge: 6.49(L) x 6.89(H) x 4.72(D) inches

FCC STATEMENT

This device complies with Part 15 of the FCC Rules. Operation is subject to the following two conditions: (1) This device may not cause harmful interference, and (2) This device must accept any interference received, including interference that may cause undesired operation.

Warning: Changes or modification to this unit not expressly approved by the party responsible for compliance could void the user's authority to operate the equipment.

NOTE: This equipment had been tested and found to comply with the limits for a Class B Digital device, pursuant to Part 15 of the FCC Rules. These limits are designed to provide reasonable protection against harmful interference in a residential installation. This equipment, installed and used in accordance with the instructions, may cause harmful interference to radio communications.

There is no guarantee that interference will not occur in a particular installation. If this equipment does cause harmful interference to radio or television reception, which can be determined by turning the equipment off and on, the user is encouraged to improve or correct turning the interference by one or more of the following measures:

- Reorient or relocate the receiving antenna
- Increase the separation between the equipment and receiver.
- Connect the equipment to an outlet on a circuit different from that to which the receiver is connected.
- Consult the dealer or an experienced radio / TV technician for help.

DECLARATION OF CONFORMITY

We

Name: Hideki Electronics, Inc.

Address: 7945 SW Mohawk, Tualatin, OR 97062

Telephone No.: 1-503-612-8395

declare that the product

Product No.: TC152

Product Name: Wireless Rain Gauge with Indoor Temperature

Manufacturer: Hideki Electronics Ltd.

Address: Unit 2304-06, 23/F Riley House, 88 Lei Muk Road, Kwai Chung,
New Territories, Hong Kong

is in conformity with Part 15 of the FCC Rules. Operation is subject to the
following two conditions:

This device may not cause harmful interference.

This device must accept any interference received, including interference
that may cause undesired operation.

**The information above is not to be used as a contact for support or
sales. Please call our customer service hotline (refer to the Standard
Warranty Information) for all injuries instead.**

STANDARD WARRANTY INFORMATION

This product is warranted from manufacturing defects for one year from
date of retail purchase. It does not cover damages or wear resulting from
accident, misuse, abuse, commercial use, or unauthorized adjustment
and repair.

Note that online product registration is required to ensure valid warranty
protection.

To register your product, go to our Company website at:

www.honeywellweatherstations.com. Click Online Product Registration
under the Customer Service menu.

Should you require assistance with this product and its operation, please
contact our Customer Service 1(866) 443 3543.

Please direct all returns to the place of the original purchase. Should this
not be possible, contact Hideki Customer Service for assistance to obtain
a Return Merchandise Authorization (RMA). Returns without a return
authorization will be refused. Please retain your original receipt as you
may be asked to provide a copy for proof of purchase.

Copyright (2007) Hideki Electronics Inc. All Rights Reserved. The
Honeywell Trademark is used under license from Honeywell Intellectual
Properties Inc.

Honeywell International Inc. makes no representations or warranties with
respect to this product.

All user manual contents and information are subject to change.